

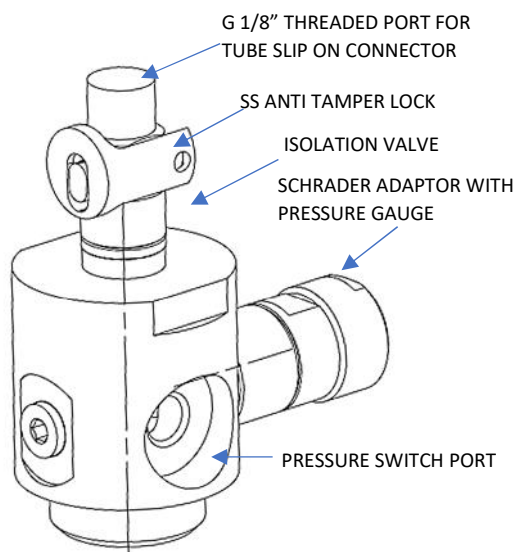
The unique AutoFireX® Direct Low Pressure Automatic Valve has been designed for DLP Fire suppression systems to accomplish discharge of agent on activation by Heat/Fire Detection (by utilising AutoFireX Linear Pneumatic Heat detection Tube). Also by using optional devices like Pressure switch, functions like annunciation via A/V Fire alarm units, or power shut off or ventilation shut off can be easily achieved. The system activation and health can also be monitored via interface of the pressure switch connected to the valve to BMS/SCADA through requisite relay units.

KEY FEATURES

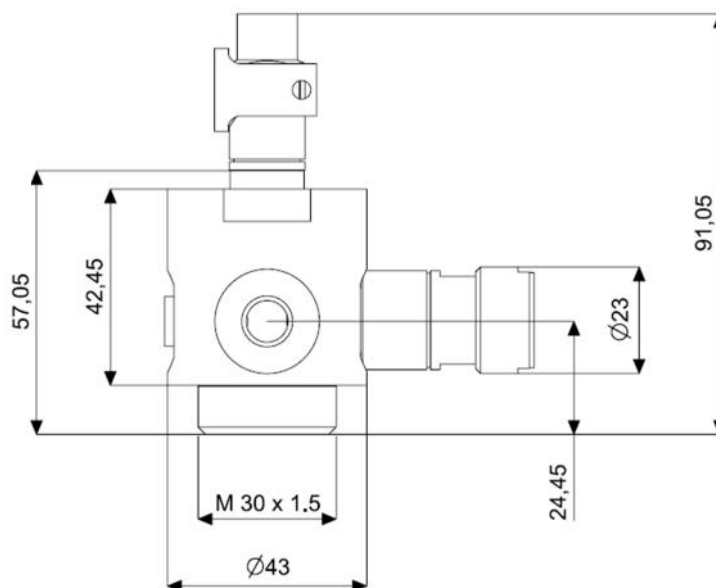
- Made from High-Grade Stainless-Steel SS 304
- Tested to Burst Pressure up to 140 Bar
- 2 x 1/8” BSP Ports/Outlets available.
- Removable Pressure gauge Schrader Adaptor mounted.
- Pressure switch/Solenoid Valve port.
- Next Generation Isolation ball valve.
- Integrated Schrader Valve for safety bleed off
- Optional PRD (pressure relief device) tested to 44 Bar
- SS Anti-Tamper Lock and seal for isolation Valve.



Description	Material Specification
Part Number	100155
Material Valve Body	Standard: Stainless Steel SS304, CE
Thread Size (screw-in connection)	Standard M 30 x 1.5
No. of Ports/Outlet	3 Ports Port 1 – For Schrader Adaptor with Removable Pressure Gauge Port 2 – For Optional Pressure Switch/Solenoid Valve Port 3 – For Optional PRD
Schrader Adaptor/Pressure Gauge Port Thread size	M 10 x 1 (As per EN3)
Pressure Gauge (Removable)	AutoFireX® Generic Pressure Gauge – M 10 x1; 12.5mm Brass Nickle coated with Pressure & temperature Grading 0-18Bar/ -30°C to +60°C) made to DIN ISO 1302; DIN 6784
Isolation Ball Valve	Chrome Nickel-plated Brass Body with PTFE Seats, NBR Seal O-RING, 7 PA66 Glass reinforced Handle, Acetylic resin Plate, Steel Screw, Chrome Nickel-plated Brass Ball Operating Temperature: -20°C - +80°C Operating Pressure: - -0.99Bar to 20 Bar
Top Tube Connection	G 1/8” suitable for Threaded Dual Seal Slip on Union fitting
Operating Temp.	-20°C to +80°C
Operating Pressure	For typical DLP systems up to 20 Bar
Burst Pressure	<140 Bar



TYPICAL DLP VALVE ASSEMBLY



TYPICAL SECTION DIAGRAM DLP VALVE ASSEMBLY

Typical Applications for systems utilising DLP Valve

- ✓ Electrical and electronic cabinets.
- ✓ LV Telecommunication & Signalling Panels.
- ✓ Data Processing areas and cabinets.
- ✓ Server/Data Storage Cabinets
- ✓ Process & Instrumentation Control Cabinets
- ✓ Laboratory fume /exhaust cabinets
- ✓ Pump enclosures
- ✓ UPS – Power Invertor units
- ✓ Flammable Chemicals storage cabinets
- ✓ Generator Enclosures
- ✓ Engine Compartments
- ✓ CNC & VMC Machining Control Panels

Compatible Extinguishing Agents: AutoFireX[®] DLP Valves are designed to be used with mostly Low-Pressure agents such as:

- ✓ Low Pressure Clean Agent (FK-5-1-12, HFC227ea, FE36, etc.)
- ✓ Dry Chemical Powder
- ✓ Wet Chemicals
- ✓ Foam
- ✓ Water

Note: All images, text, graphics are copyright protected and property of AutoFireX Ltd.

AFX DLP Valve TDS- DOC- AFX- 0019 Rev July 2020