

**Monitored output module
DIN01-OM**



Typical applications:

The DIN01-OM monitored output module is designed to enable sounders and beacons with conventional fire detection to be fully integrated with a main intelligent addressable fire system.

The module is designed for ease of installation with no hard addressing required, and it uses just a single address. It is certified to EN54 parts 17 & 18.

An external power supply is required to drive the output circuit. This power supply must be regulated for fire and current limited.

Features

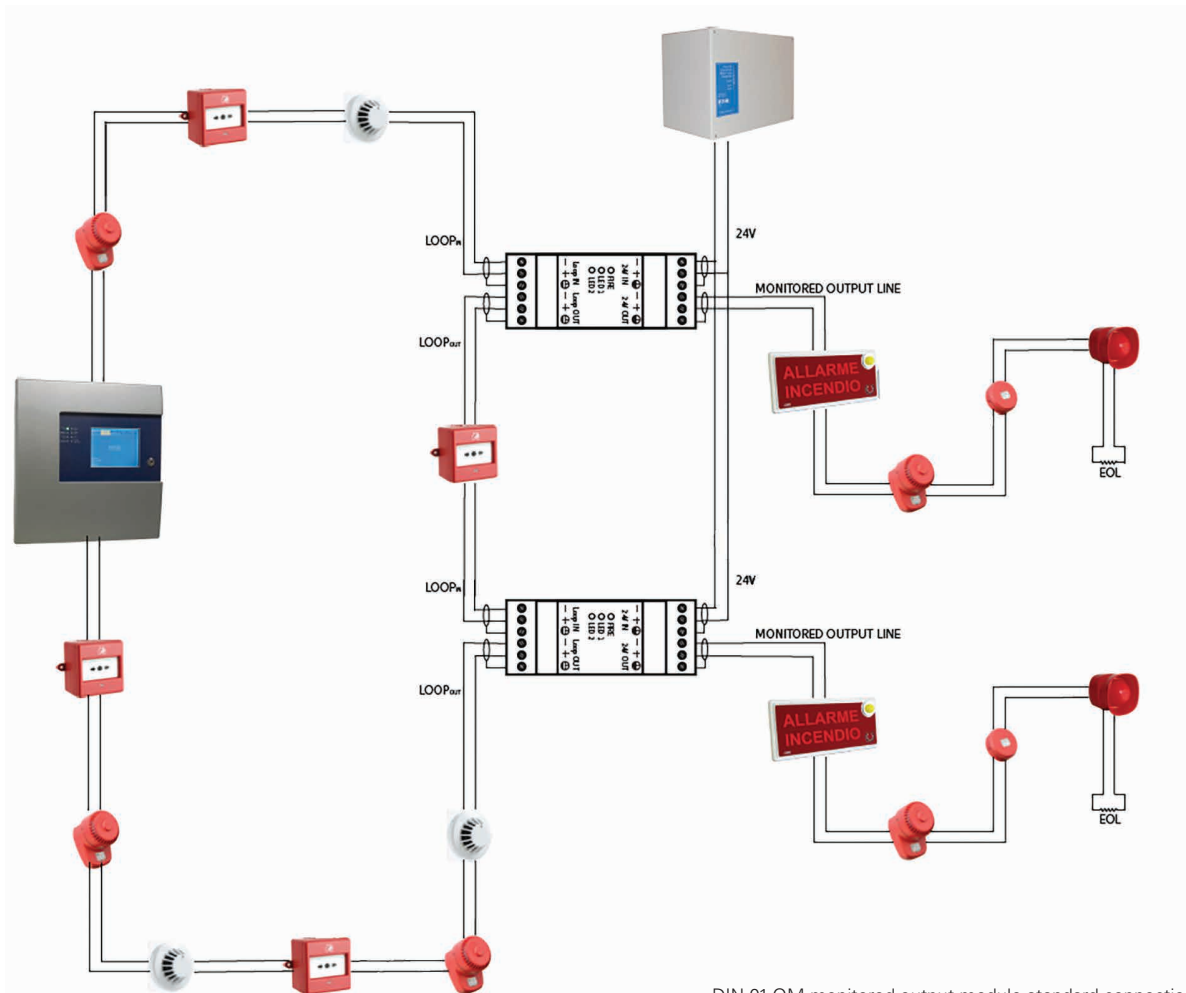
	DIN01-OM
Operating temperature	-10°C to +55°C
Ingress protection	IP20
Voltage	20-30Vdc

Dimensions

Description	H (mm)	W (mm)	D (mm)
DIN01-OM monitored output module	90.2	36.3	57.5

Catalogue numbers

Description	Code
IU/AD/OU DIN rail monitored output module (EFAD07A-05OU00)	DIN01-OM



DIN-01-OM monitored output module standard connections